

DIVIDING CREEK QUADRANGLE
MARYLAND
7.5 MINUTE SERIES (ORTHOPHOTOQUAD)



State of Maryland
Parris N. Glendening, Governor
Kathleen Kennedy Townsend, Lt. Governor
Department of Natural Resources
J. Charles Fox, Secretary
Karen M. White, Deputy Secretary
Resource Assessment Service
Paul O. Massicot, Director
Maryland Geological Survey
Emery T. Cleaves, Director

Shoreline Changes
Dividing Creek Quadrangle, MD

Compiled by

Maryland Geological Survey
Coastal and Estuarine Geology Program
2300 St. Paul Street
Baltimore, Maryland 21218
Telephone: (410) 554-5500
Website: www.mgs.md.gov

2001

LEGEND

 1989 Shoreline

SOURCES OF DATA

Base Image

Composite of resampled digital orthophoto quarter quads (Dividing Creek - NE, NW, SE, SW) produced by the Maryland Department of Natural Resources (DNR) from aerial photography flown on April 14, 1989

Shorelines

1989 - orthophotoquad shoreline extracted from a DNR digital wetlands delineation based on photo interpretation of digital orthophoto quarter quads

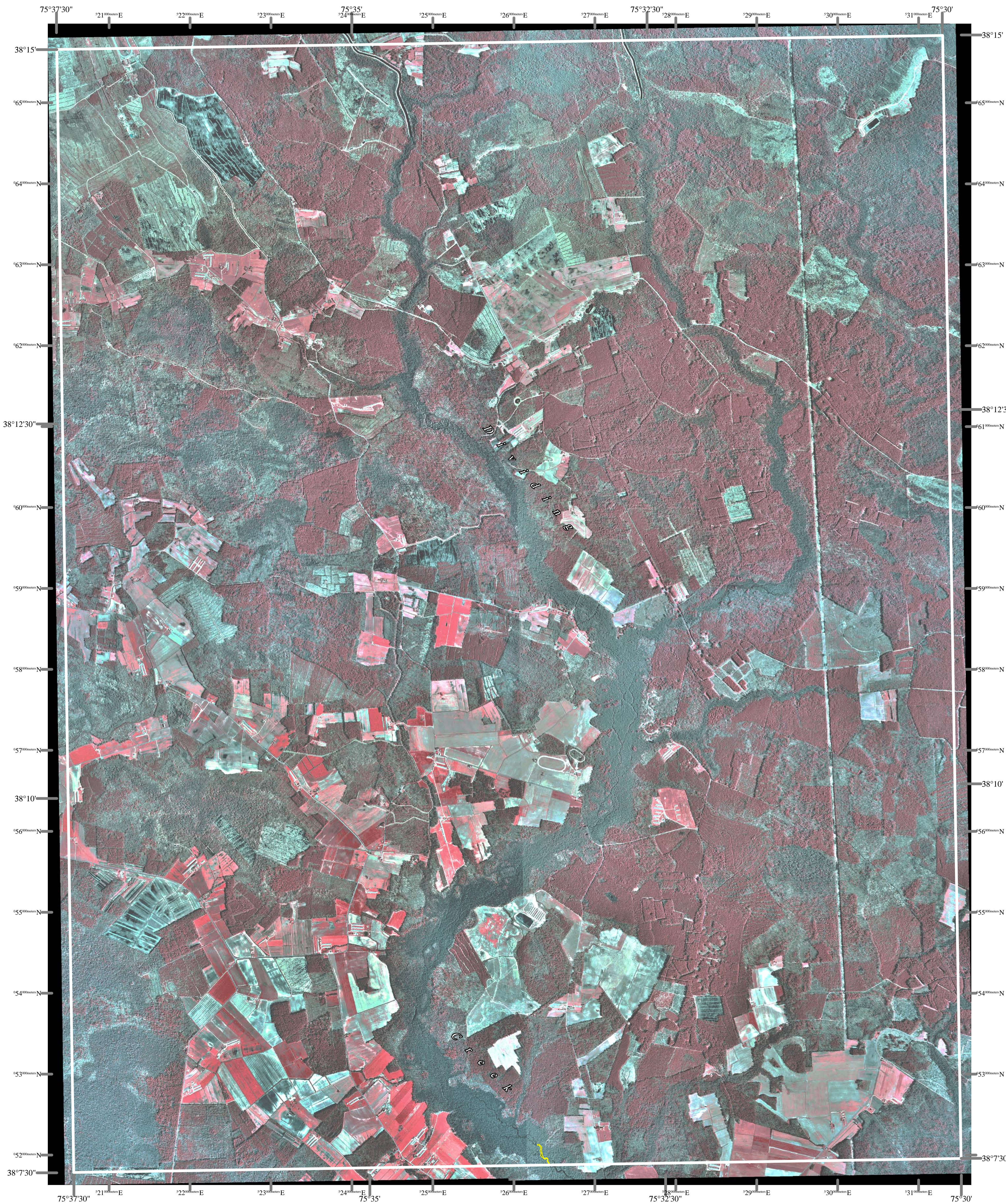
ACKNOWLEDGMENTS

This map was prepared using the geographic information system TNTmips by MicroImages, Inc.

Partial funding was provided by a grant from the National Oceanic and Atmospheric Administration (Award No. NA 07OZ0118), administered by the Maryland Department of Natural Resources, Coastal Zone Management Program (CZM Grant M01-056 CZM 040).

The facilities and services of the Maryland Department of Natural Resources are available to all without regard to race, color, religion, sex, sexual orientation, age, national origin or physical or mental disability.

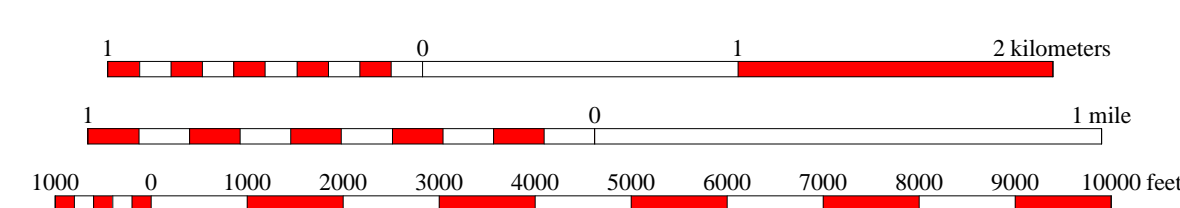
This document is available in alternative format upon request from a qualified individual with a disability.



North American Datum of 1983 (NAD 83)
Projection and 1000-meter grid ticks:
Maryland State Plane Coordinate System



SCALE 1:24000



HORIZONTAL DATUM NAD 83



1	2	3
4	5	6
7	8	

- 1 Eden
- 2 Salisbury
- 3 Wango
- 4 Princess Anne
- 5 Snow Hill
- 6 Kingston
- 7 Pocomoke City
- 8 Girdletree

INDEX TO ADJOINING 7.5' MAPS

DIVIDING CREEK, MD
MGS-01-065-1

First Edition

DATE OF PHOTOGRAPHY
April 14, 1989

