

GIRDLETREE QUADRANGLE
MARYLAND-VIRGINIA
7.5 MINUTE SERIES (ORTHOPHOTOQUAD)



State of Maryland
Parris N. Glendening, Governor
Department of Natural Resources
Sarah J. Taylor-Rogers, Secretary
Resource Assessment Service
Paul Massicot, Director
Maryland Geological Survey
Emery T. Cleaves, Director

Shoreline Changes
Girdletree, MD-VA

Compiled by

Jennifer A. Stott, E. Lamere Hennessee, and Randall T. Kerhin

Maryland Geological Survey
Coastal and Estuarine Geology Program
2300 St. Paul Street
Baltimore, Maryland 21218
Telephone: (410) 554-5500
Website: www.mgs.md.gov

1999

LEGEND

- 1843 Shoreline
- 1942 Shoreline
- 1963 Shoreline
- 1989 Shoreline

SOURCES OF DATA

Base Image

Composite of resampled digital orthophoto quarter quads (Girdletree - NE, NW, SE, SW) produced by the Maryland Department of Natural Resources (DNR) from aerial photography flown on March 30, 1988 (NW, SW) and April 12, 1989 (NE, SE)

Shorelines

1843 - Historical Shorelines CZM Map 88A (Maryland Geological Survey, 1975); digitized on screen using TNTmips

1942, 1963 - National Oceanic and Atmospheric Administration - National Ocean Service T-sheets listed below; digitized on screen using TNTmips

T-sheet	Field Edit	Date of Photography
T-8154	none	1942
T-12091	none	1961, 1963

1989 - Shoreline extracted from a DNR digital wetlands delineation based on photo interpretation of 1989 digital orthophoto quarter quads

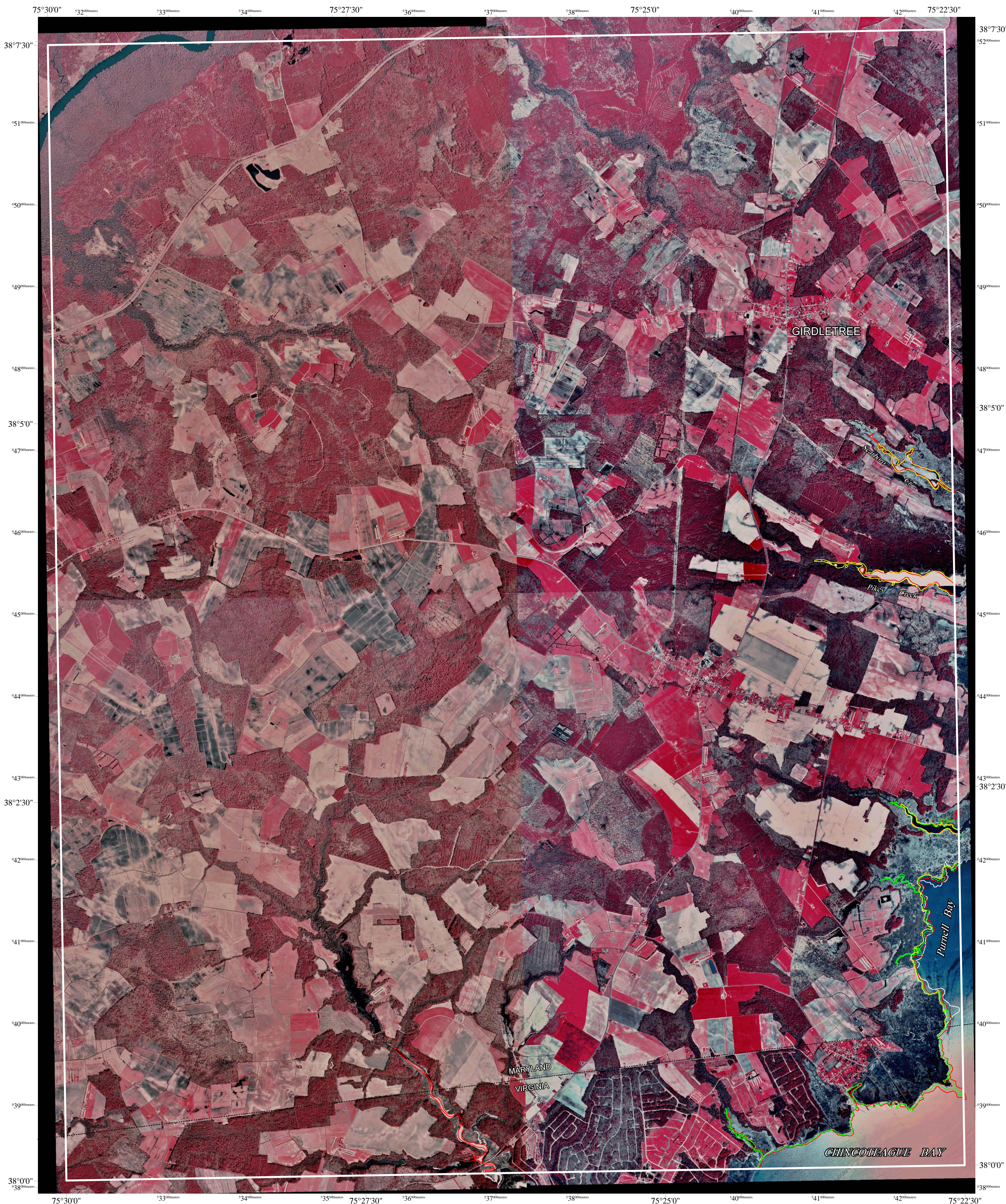
ACKNOWLEDGMENTS

This map was prepared using the geographic information system TNTmips by MicroImages, Inc.

Partial funding was provided by a grant from the National Oceanic and Atmospheric Administration (Award No. NA 970Z0164), administered by the Maryland Coastal Zone Management Program, Department of Natural Resources (CZM Grant M00-041 CZM 037).

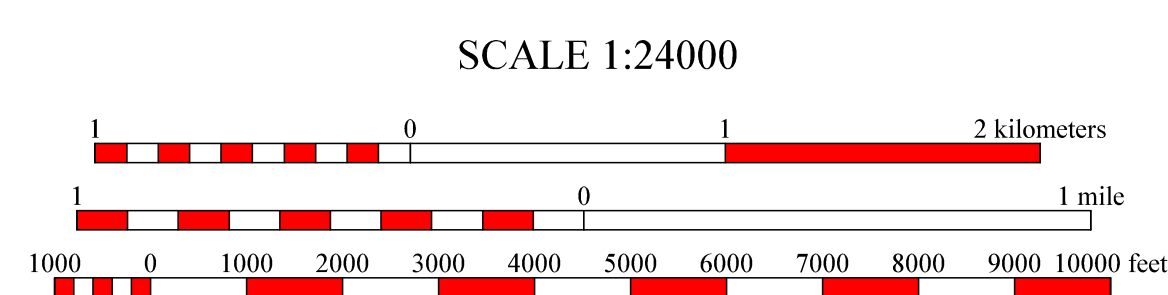
The facilities and services of the Maryland Department of Natural Resources are available to all without regard to race, color, religion, sex, sexual orientation, age, national origin, or physical or mental disability.

This document is available in alternative format upon request from a qualified individual with a disability.



North American Datum of 1983 (NAD 83)
Projection and 1000-meter grid ticks:
Maryland State Plane Coordinate System

GIRDLETREE, MD-VA
MGS-00-088-1
First Edition
DATES OF PHOTOGRAPHY
A April 12, 1989
B March 30, 1988



HORIZONTAL DATUM NAD 83



1	2	3
4	A	5
6	7	8

- 1 Dividing Creek
- 2 Snow Hill
- 3 Public Landing
- 4 Pocomoke City
- 5 Boxton
- 6 Hallwood
- 7 Chincoteague West
- 8 Chincoteague East

INDEX TO ADJOINING 7.5' MAPS

