

HORSESHOE POINT QUADRANGLE
MARYLAND
7.5 MINUTE SERIES (ORTHOPHOTOQUAD)



State of Maryland
Parris N. Glendening, Governor
Kathleen Kennedy Townsend, Lt. Governor
Department of Natural Resources
J. Charles Fox, Secretary
Karen M. White, Deputy Secretary
Resource Assessment Service
Paul O. Massicot, Director
Maryland Geological Survey
Emery T. Cleaves, Director

Shoreline Changes
Horseshoe Point Quadrangle, MD

Compiled by

Maryland Geological Survey
Coastal and Estuarine Geology Program
2300 St. Paul Street
Baltimore, Maryland 21218
Telephone: (410) 554-5500
Website: www.mgs.md.gov

2001

LEGEND

- 1846, 1847 Shoreline
- 1934, 1937 Shoreline
- 1943, 1944 Shoreline
- 1994 Shoreline

SOURCES OF DATA

Base Image
Orthophotoquad (38076-G4-OQ-024) produced by the U.S. Geological Survey from the following 1:40000 scale aerial (NAPP) photographs:

NAPP Photo ID	Date of Photography
14-62	4/14/1989
14-64	4/14/1989
19-174	4/20/1989

Shorelines
1846, 1847 - Historical Shorelines CZM Maps 29A and 58A (Maryland Geological Survey, 1975); digitized using AutoCAD

1934, 1937, 1943, 1944 - National Oceanic and Atmospheric Administration, National Ocean Service T-sheets listed below; digitized using GSMAP or AutoCAD

T-sheet	Field Edit	Date of Photography
T-5347	none	1934
T-5723	none	1937
T-8255	1944	1938, 1942
T-8257	1942	1942, 1943

1994 - orthophotoquad shoreline extracted from a Maryland Department of Natural Resources (DNR) digital wetlands delineation based on photo interpretation of a DNR digital orthophoto quarter quad (Horseshoe Point - NW) flown on April 8, 1994

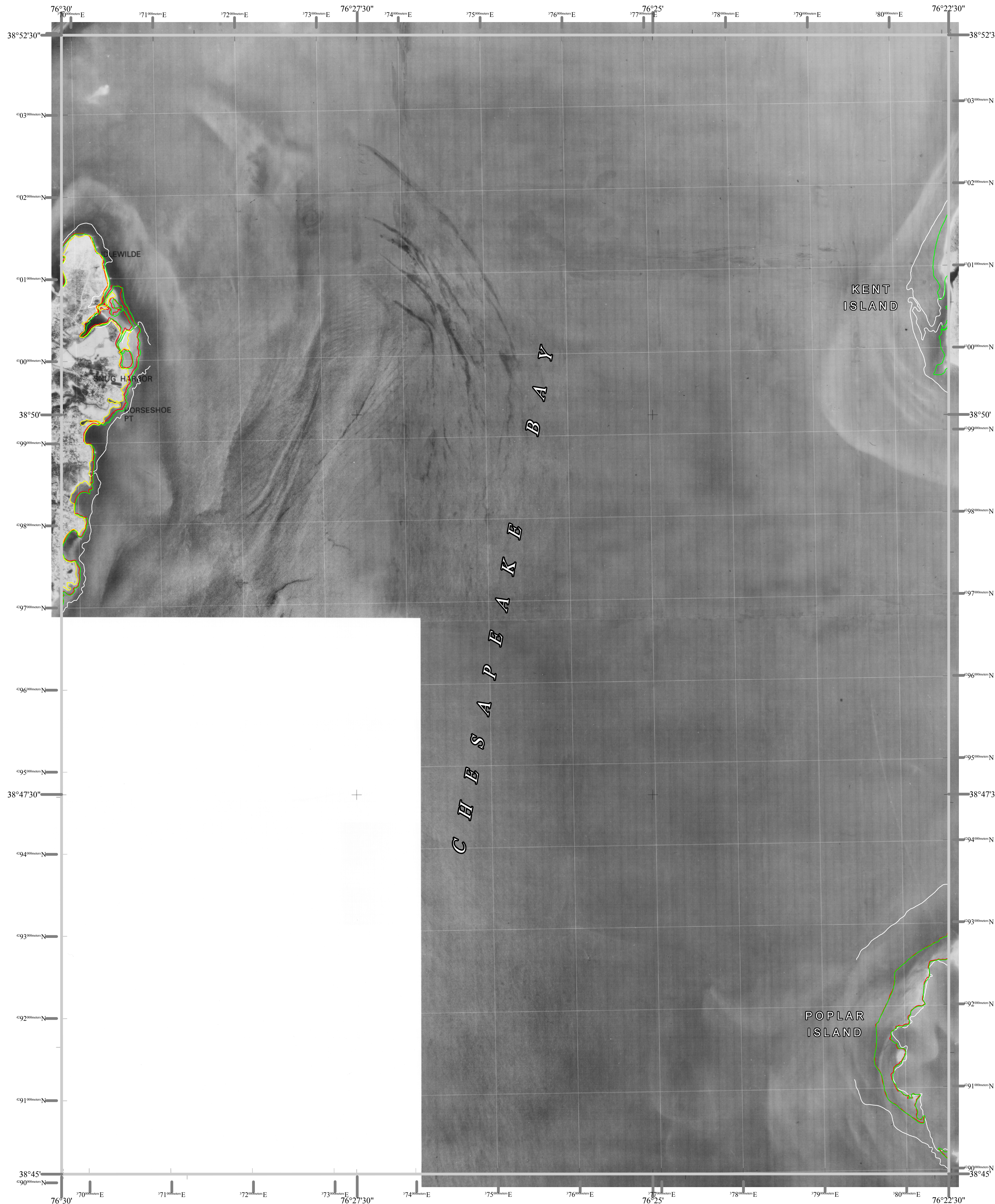
ACKNOWLEDGMENTS

This map was prepared using the geographic information system TNTmips by MicroImages, Inc.

Partial funding was provided by a grant from the National Oceanic and Atmospheric Administration (Award No. NA07OZ0118), administered by the Maryland Department of Natural Resources, Coastal Zone Management Program (CZM Grant M01-056 CZM 040).

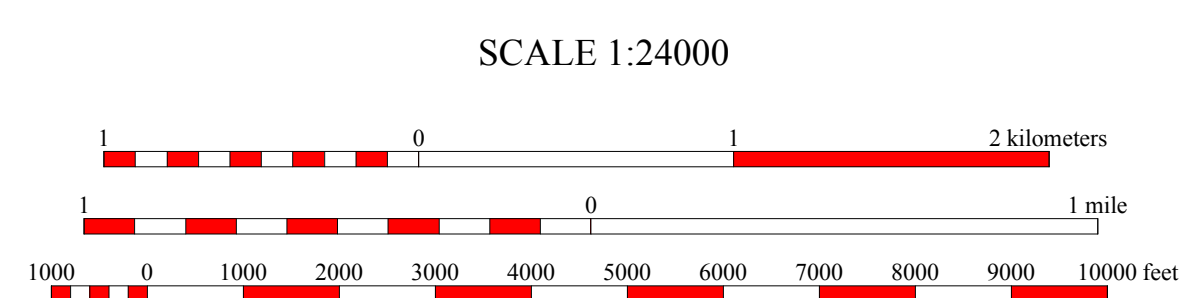
The facilities and services of the Maryland Department of Natural Resources are available to all without regard to race, color, religion, sex, sexual orientation, age, national origin, or physical or mental disability.

This document is available in alternative format upon request from a qualified individual with a disability.



North American Datum of 1983 (NAD 83)
Projection and 1000-meter grid ticks:
Universal Transverse Mercator: zone 18

The North American Datum of 1927 (NAD 27)
shown as dashed corner ticks.



HORIZONTAL DATUM NAD 83

HORSESHOE POINT, MD
MGS-01-116-1
Second Edition
DATES OF PHOTOGRAPHY
A April 20, 1989
B April 14, 1989



1	2	3
4	5	6
7	8	

INDEX TO ADJOINING 7.5' MAPS

