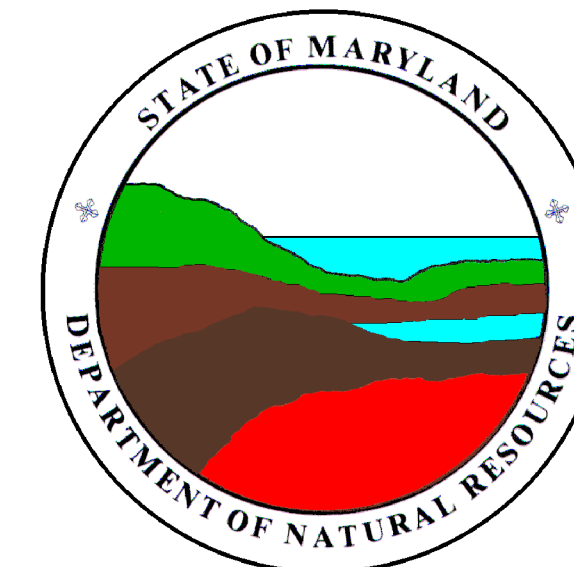


SOUTH RIVER QUADRANGLE
MARYLAND
7.5 MINUTE SERIES (ORTHO PHOTOQUAD)



State of Maryland
Parris N. Glendening, Governor
Kathleen Kennedy Townsend, Lt. Governor
Department of Natural Resources
J. Charles Fox, Secretary
Karen M. White, Deputy Secretary
Resource Assessment Service
Paul O. Massicot, Director
Maryland Geological Survey
Emery T. Cleaves, Director

Shoreline Changes
South River Quadrangle, MD

Compiled by

Maryland Geological Survey
Coastal and Estuarine Geology Program
2300 St. Paul Street
Baltimore, Maryland 21218
Telephone: (410) 554-5500
Website: www.mgs.md.gov

2001

LEGEND

- 1847 Shoreline
- 1934 Shoreline
- 1944 Shoreline
- 1965 Shoreline
- 1994 Shoreline

SOURCES OF DATA

Base Image
Composite of resampled digital orthophoto quarter quads (South River - NE, NW, SE, SW) produced by the Maryland Department of Natural Resources (DNR) from aerial photography flown on April 4, 1994, and April 8, 1994

Shorelines
1847 - Historical Shorelines CZM Map 31A (Maryland Geological Survey, 1975); digitized using AutoCAD

1934, 1944, 1965 - National Oceanic and Atmospheric Administration, National Ocean Service T-sheets listed below; digitized using GSMAP or AutoCAD

T-sheet	Field Edit	Date of Photography
T-5341	none	1933, 1934
T-5344	none	1934
T-5347	none	1934
T-5419	none	1934
T-8264	1944	1938, 1943
T-12956	none	1965

1994 - orthophotoquad shoreline extracted from a DNR digital wetlands delineation based on photo interpretation of digital orthophoto quarter quads

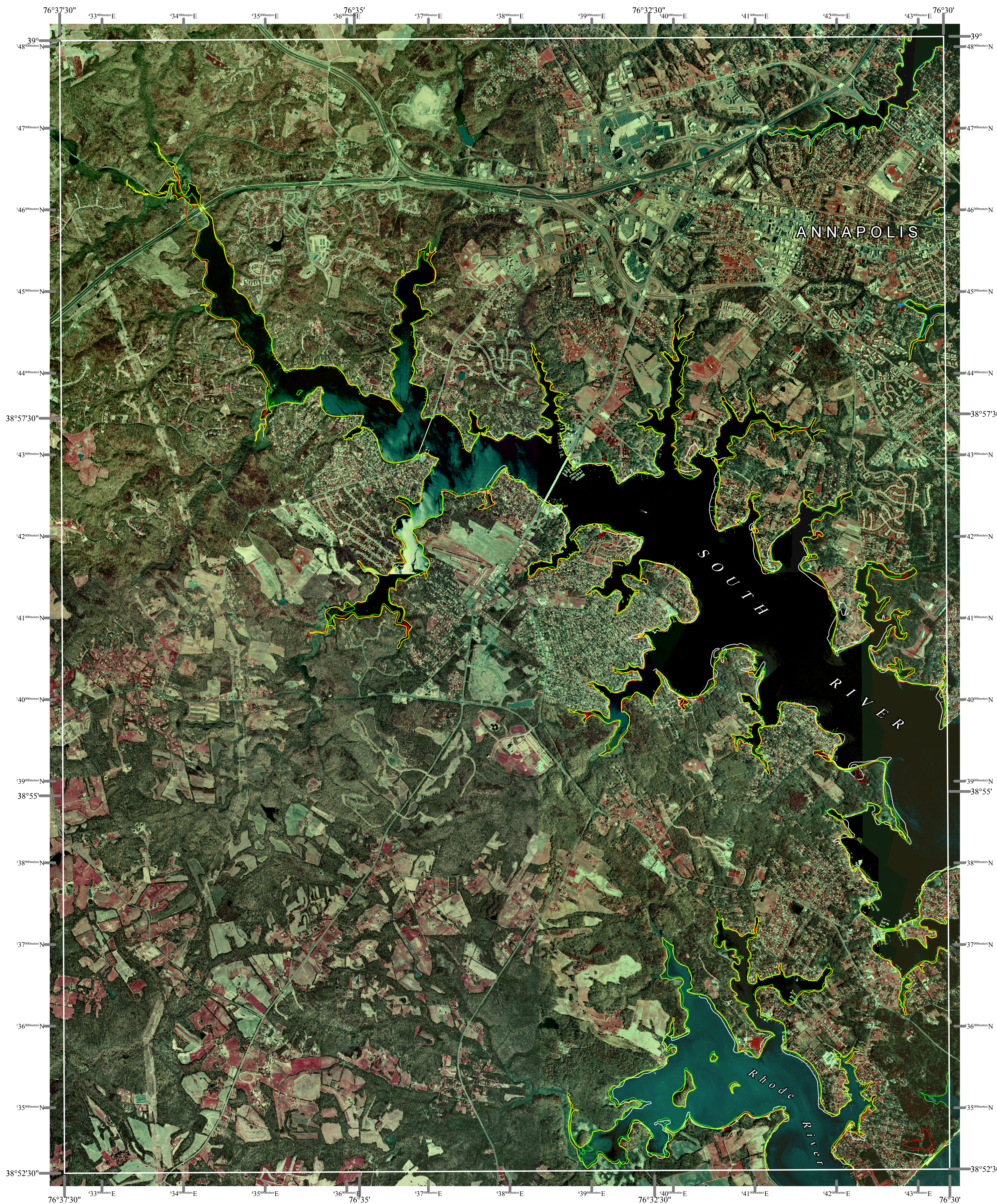
ACKNOWLEDGMENTS

This map was prepared using the geographic information system TNTmips by MicroImages, Inc.

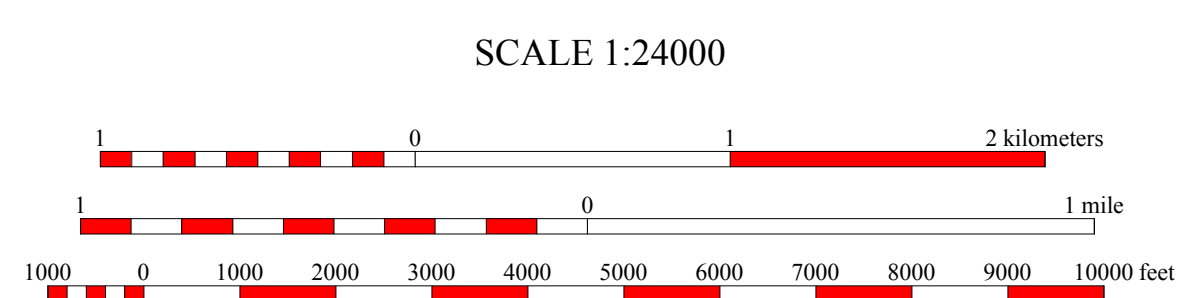
Partial funding was provided by a grant from the National Oceanic and Atmospheric Administration (Award No. NA 07OZ0118), administered by the Maryland Department of Natural Resources, Coastal Zone Management Program (CZM Grant M01-056 CZM 040).

The facilities and services of the Maryland Department of Natural Resources are available to all without regard to race, color, religion, sex, sexual orientation, age, national origin or physical or mental disability.

This document is available in alternative format upon request from a qualified individual with a disability.



North American Datum of 1983 (NAD 83)
Projection and 1000-meter grid ticks:
Maryland State Plane Coordinate System



HORIZONTAL DATUM NAD 83

SOUTH RIVER, MD
MGS-01-223-1
Second Edition
DATES OF PHOTOGRAPHY
A April 4, 1994
B April 8, 1994



1	2	3
4	A	B
6	7	8

- 1 Odenton
- 2 Round Bay
- 3 Gibson Island
- 4 Bowie
- 5 Annapolis
- 6 Bristol
- 7 Deale
- 8 Horseshoe Point

INDEX TO ADJOINING 7.5' MAPS

