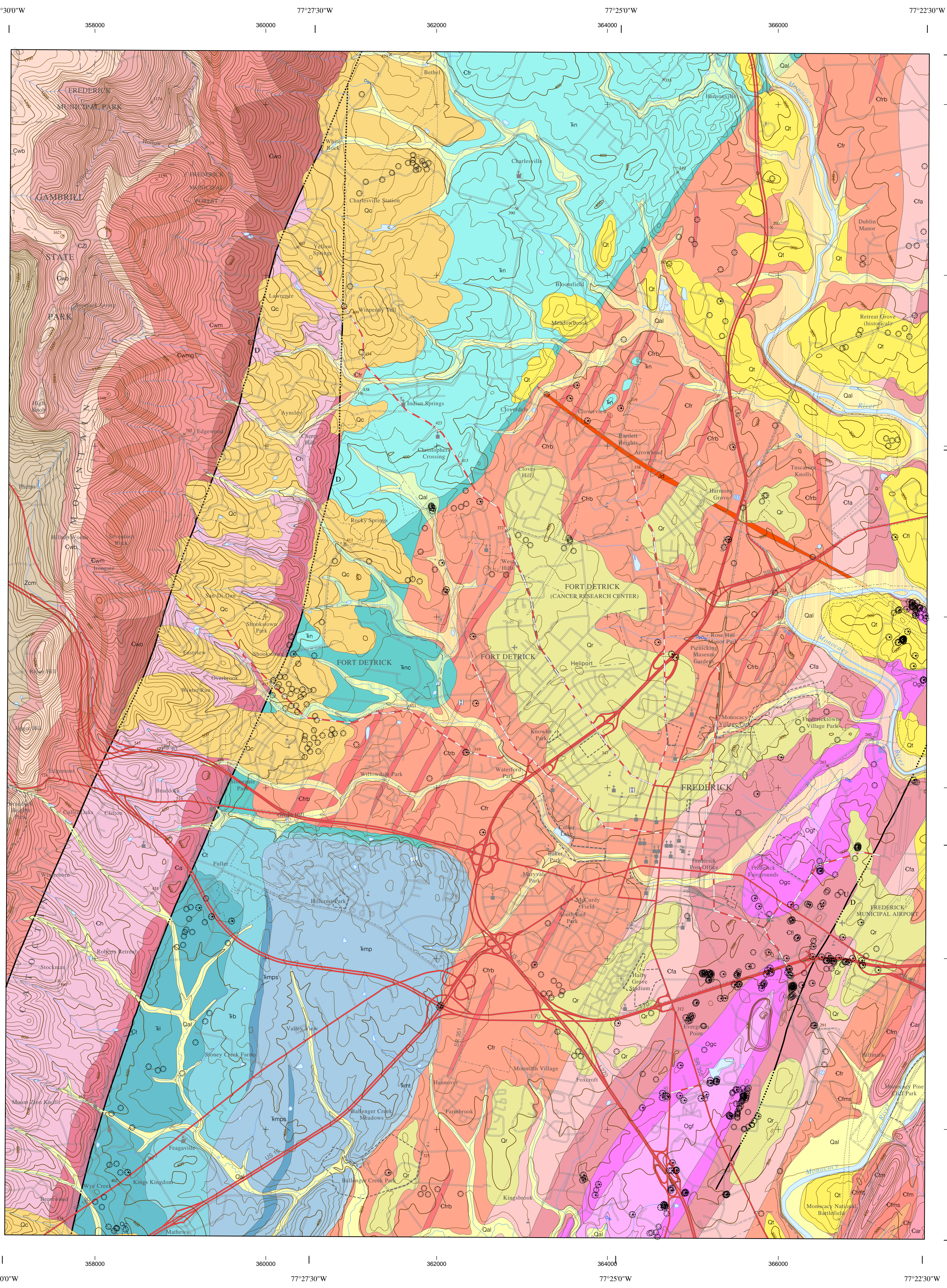


Description of Map Units



Base layers derived from U.S. Geological Survey (USGS) 7.5-minute Series (Topographic) Frederick Quadrangle 1953 (photorevised 1993) Digital line graphs for hydrography, topography, transportation and boundaries (1:24,000) Cultural features shown from USGS Geographic Names Information System database (To determine current magnetic declination see: <http://www.ngdc.noaa.gov/cgi-bin/seg/gmap/1dath1.pl>)

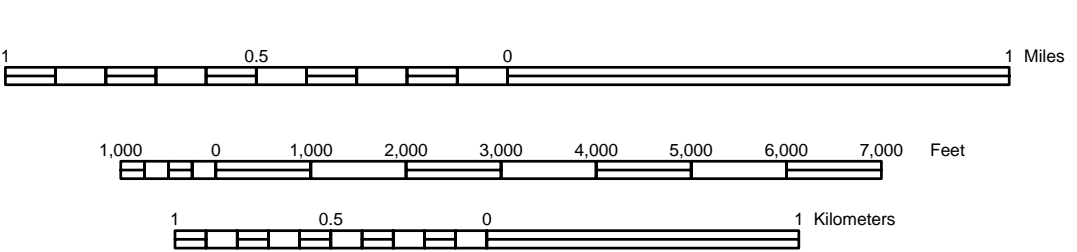
Current map projection: Maryland State Plane Coordinate System 1987 (Projection: Lambert Conformal Conic, 1980 geodetic reference system) (Horizontal Datum: North American Datum 1983) MD State Plane 2000-meter grid lines and coordinates shown in black. Geographic coordinates (latitude/longitude) shown near corners and 2.5' intervals (in black)

- Quaternary: Alluvium, Colluvium, Weathering residuum, Terrace deposits, Diabase dikes
Culpeper Basin: Leesburg Formation, Balk Bluff Siltstone, Manassas Formation, Poolsville Member, Tuscarora Creek Member
Gettysburg Basin: Gettysburg Conglomerate, New Oxford Formation, Grove Formation, Fountain Rock Member, Ceresville Member
Frederick Formation, Lime Kiln Member, Adamstown Member, Rocky Springs Station Member, Monocacy Member, Tomstown Formation, Araby Formation, Antietam Formation, Harpers Formation, Weverton Formation, Owens Creek Member, Maryland Heights Member, Buzzard Knob Member, Loudoun Formation, Catoctin Formation, Metabasalt

Karst Features of the Frederick Quadrangle, Frederick County, Maryland

By David K. Brezinski 2004

Scale 1:24 000



Contour Interval 20 Feet National Geodetic Vertical Datum of 1929 (To convert elevations to the North American Vertical Datum of 1988, subtract 1 foot) (To convert from feet to meters, multiply by 0.3048)

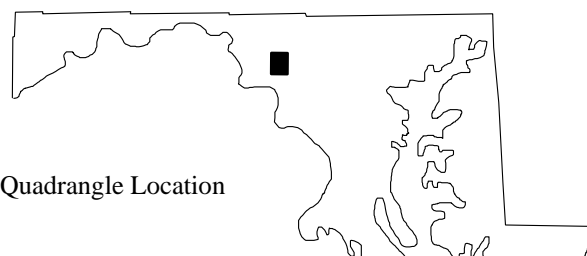


Table with 8 columns and 2 rows listing adjacent 7.5' quadrangle names: 1. Myersville, 2. Catoctin Furnace, 3. Woodboro, 4. Middletown, 5. Walkersville, 6. Point of Rocks, 7. Buckeystown, 8. Urbana

Copies of this map are available in hard copy (paper) and digital form from: MARYLAND GEOLOGICAL SURVEY 2300 Saint Paul Street Baltimore, MD 21218

Explanation of Map Symbols. Geologic Symbols: Contacts, Karst Features, Transportation, Topography, Hydrography, Culture. Base Map Symbols: Primary route, Secondary route, Light duty road, Unimproved road, Trail, Railroad, Power transmission line, Substation. Geologic Symbols: Faults, Folds, Minor syncline, Minor anticline. Topography: Topographic index contour, Topographic intermediate contour. Hydrography: Water body. Culture: Boundary, Park or reservation boundary, Small park boundary, Cemetery, Church, School, Airport, Hospital.

References

Brezinski, D.K., 1992. Lithostratigraphy of the western Blue Ridge cover rocks in Maryland. Maryland Geological Survey Report of Investigations 55, 69 p.
Brezinski, D.K., 2004a. Stratigraphy of the Frederick Valley and its relationship to karst development. Maryland Geological Survey Report of Investigations 75, 101 p.
Brezinski, D.K., 2004b. Geologic Map of the Frederick Quadrangle, Frederick County, Maryland. Maryland Geological Survey, Quadrangle Geologic Map, scale 1:24,000 (Version FREDEGEO2004.1).
Brezinski, D.K., and Southworth, S., 2001. Geologic Map of the Buckeystown Quadrangle, Frederick and Montgomery Counties, Maryland. Maryland Geological Survey, Quadrangle Geologic Map, scale 1:24,000 (Version BUCKEGEO2001.1).
Fauth, J.L., 1977. Geologic map of the Catoctin Furnace and Blue Ridge Summit quadrangles, Maryland. Maryland Geological Survey Geologic Map, scale 1:24,000.
Hoy, R.B., and Schumacher, R.L., 1956. Fault in Paleozoic rocks near Frederick, Maryland. Geological Society of America Bulletin, v. 67, no. 11, p. 1521-1528.
Lee, K.Y., 1979. Triassic-Jurassic geology of the northern part of the Culpeper Basin, Virginia and Maryland. U.S. Geological Survey Open File Report 79-1557, 8 p.
Reinhardt, J., 1974. Stratigraphy, sedimentology, and Cambro-Ordovician paleogeography of the Frederick Valley, Maryland. Maryland Geological Survey Report of Investigations 23, 74 p.

Supplemental Information

Use Caution: These data represent the results of data collection/processing for a specific Department of Natural Resources, Maryland Geological Survey activity and indicate general existing conditions. As such, they are only valid for the intended use, content, time, and accuracy specifications. The user is responsible for the results of any application of the data for other than their intended purpose. The Maryland Geological Survey makes no warranty, expressed or implied, as to the use or appropriateness of the licensed data, and there are no warranties of merchantability or fitness for a particular purpose of use. The Maryland Geological Survey makes no representation to the accuracy or completeness of the data and may not be held liable for human error or defect. Data are only valid at 1:24,000 scale. Data should not be used at a scale greater than that.
Acknowledgements: This map was funded in part by the Maryland State Highway Administration.
Field mapping of karst features was conducted in 2000 to 2002 and updated in 2003 to 2004. Field mapping of the geology was completed in 2000 and 2001 and updated in 2004. This karst map was compiled in digital form and edited by Liana Dunne and Heather Quinn, Maryland Geological Survey. Additional digital support was provided by Catherine Lockhart, Towson University, Center for Geographic Information Sciences.
The facilities and services of the Maryland Department of Natural Resources are available to all without regard to race, color, religion, sex, sexual orientation, age, national origin or physical or mental disability.
Version: FREDKST2004.1
Released June 2004

STATE OF MARYLAND Governor Robert L. Ehrlich, Jr. Lieutenant Governor Michael S. Steele



DEPARTMENT OF NATURAL RESOURCES C. Ronald Franks Secretary W. P. Jensen Deputy Secretary MARYLAND GEOLOGICAL SURVEY Emery T. Cleaves Director